

US  HIGHWAY
IH 37 TO US 83

Welcome

Agenda

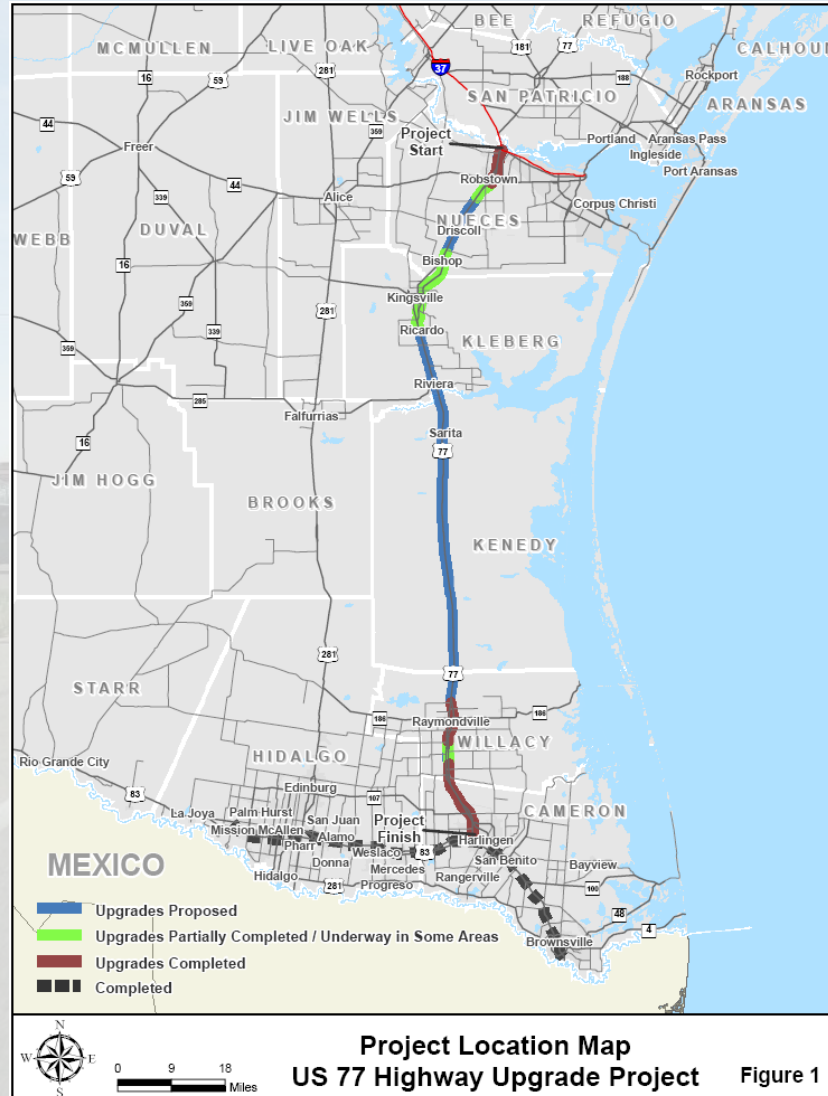
- Acknowledgements
- Introduction of Project Team
- Technical Presentation
- Conclusion
- Resume Open House

US  HIGHWAY
IH 37 TO US 83

Purpose of this Meeting

- Introduce Project
- Explain Need & Purpose
- Offer Preliminary Solutions
- Solicit comments

Project Location Map



Existing Facility

- Four-lane facility
- Divided by a center median
- Intersection crossings are at-grade, with the exception of newer construction near Kingsville, Bishop, and Raymondville.

Project Need

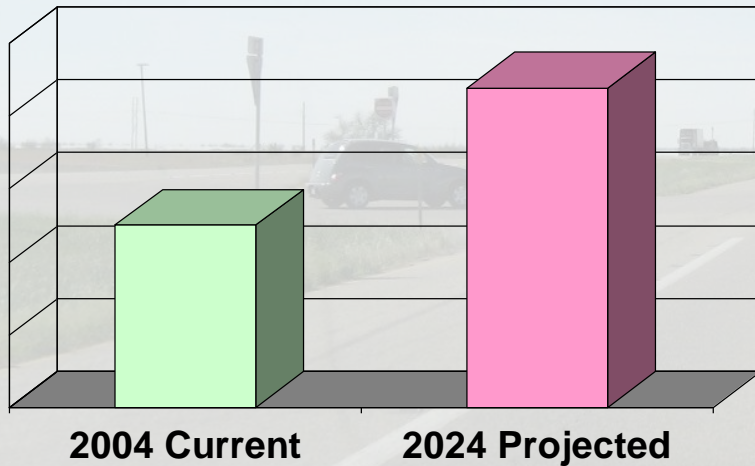
- ***Improve***
 - Traffic-related safety within communities located on US 77;
 - Safety for through-traffic;
 - Traffic mobility; and
 - System continuity.

Need: At-Grade Intersections compromise safety on this high-speed highway facility.

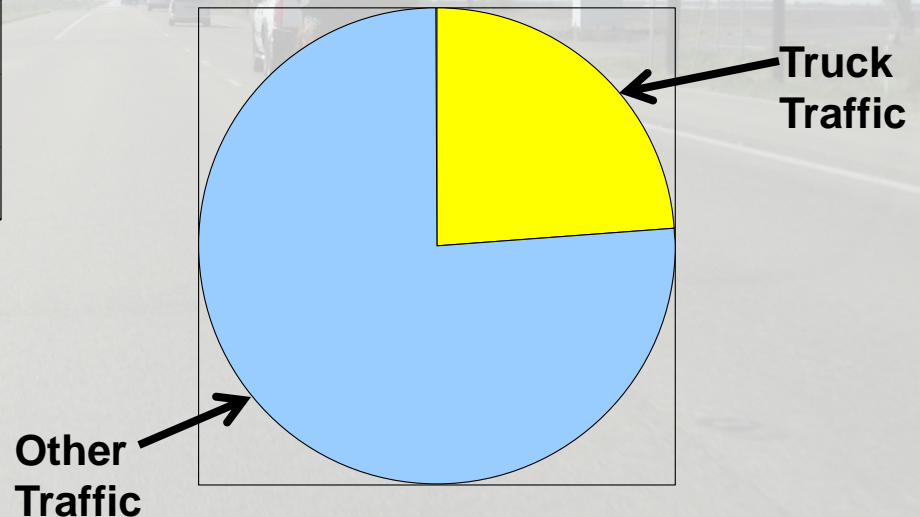


Need: Projected increases in traffic on US 77 will increase the potential for incidents associated with the numerous at-grade intersections

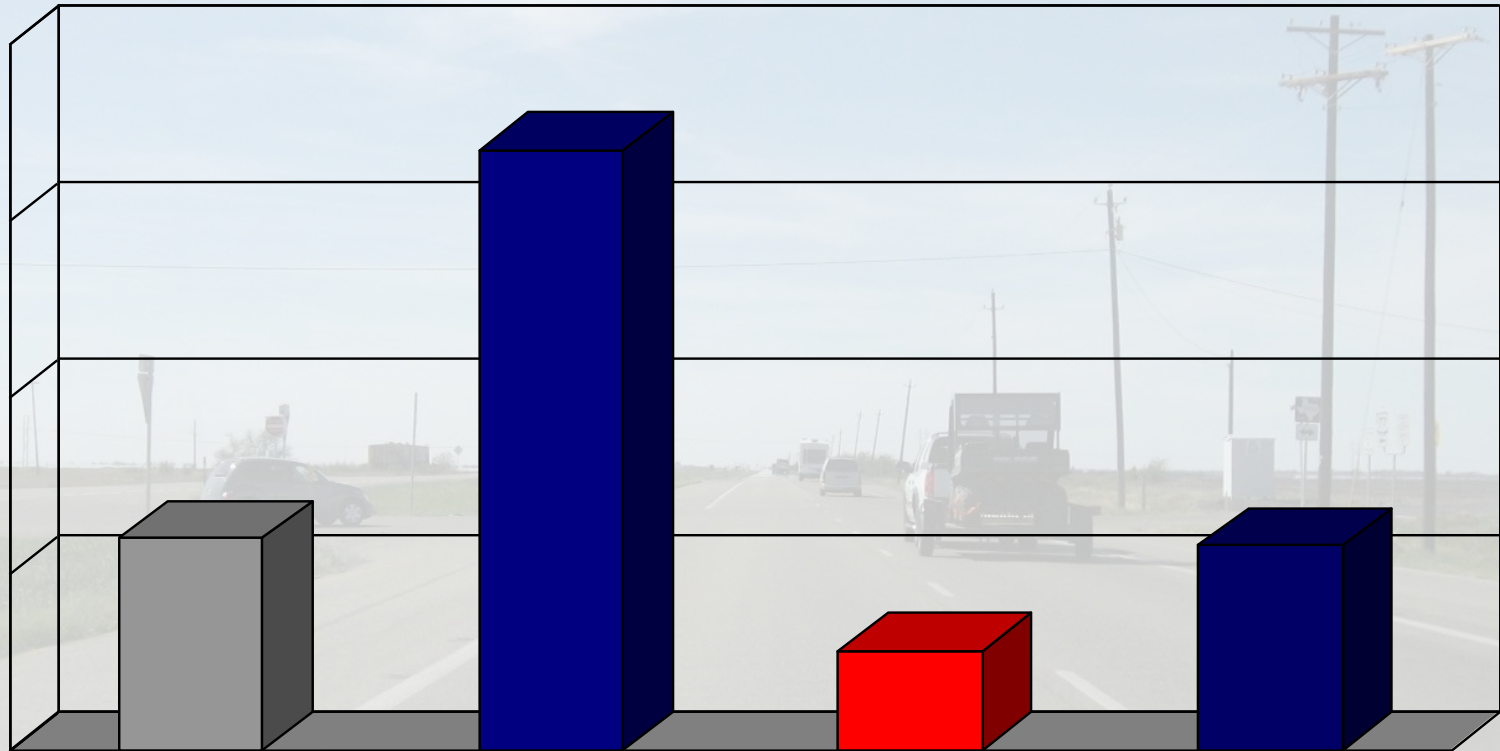
Traffic In Projected Area



Current Traffic on US 77



Population Growth Rates



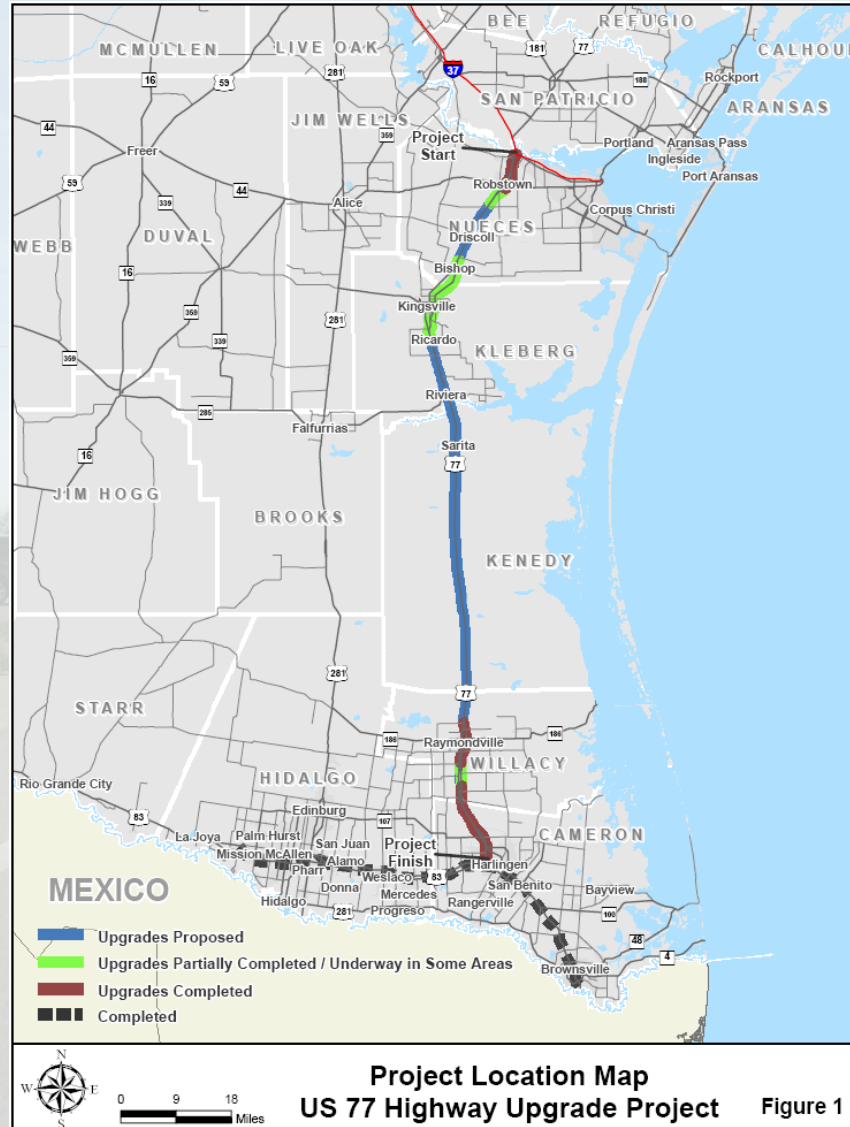
*2020 Projected
Rio Grande*

*2050 Projected
Rio Grande*

*2020 Projected
Coastal Bend*

*2050 Projected
Coastal Bend*

Need: System Continuity That Meets Driver Expectations



Need: System Continuity That Meets Driver Expectations

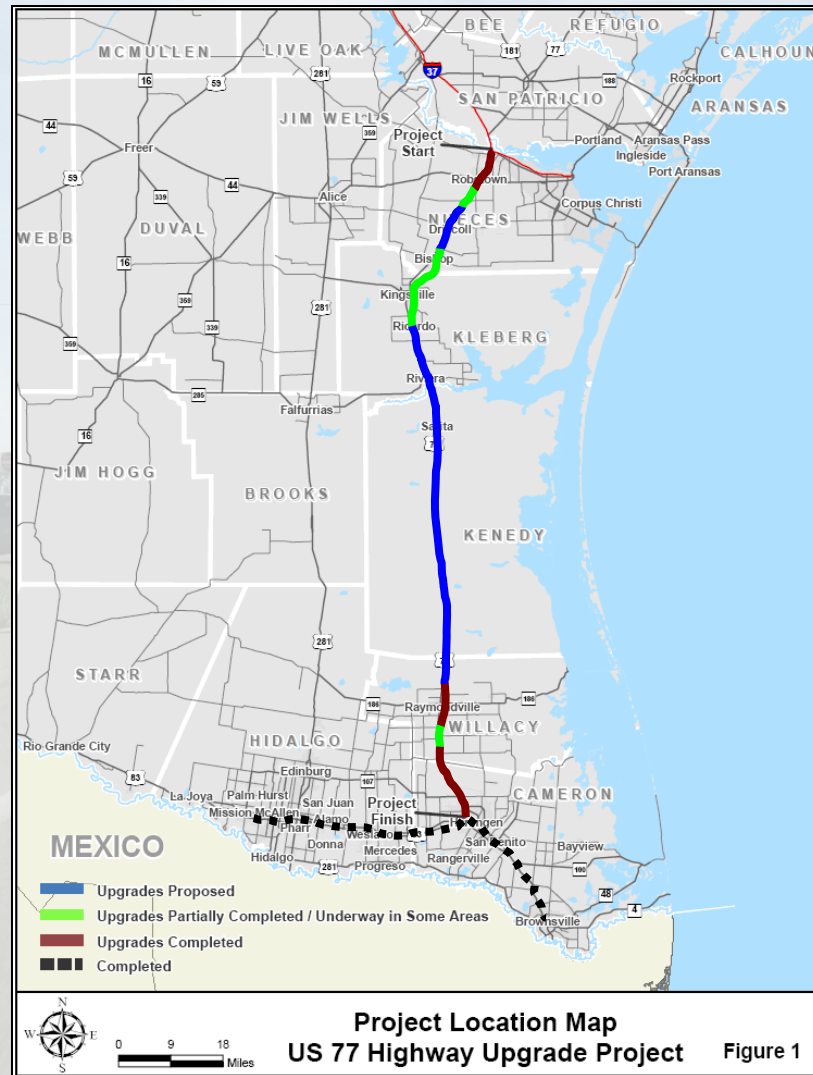


Possible Solutions

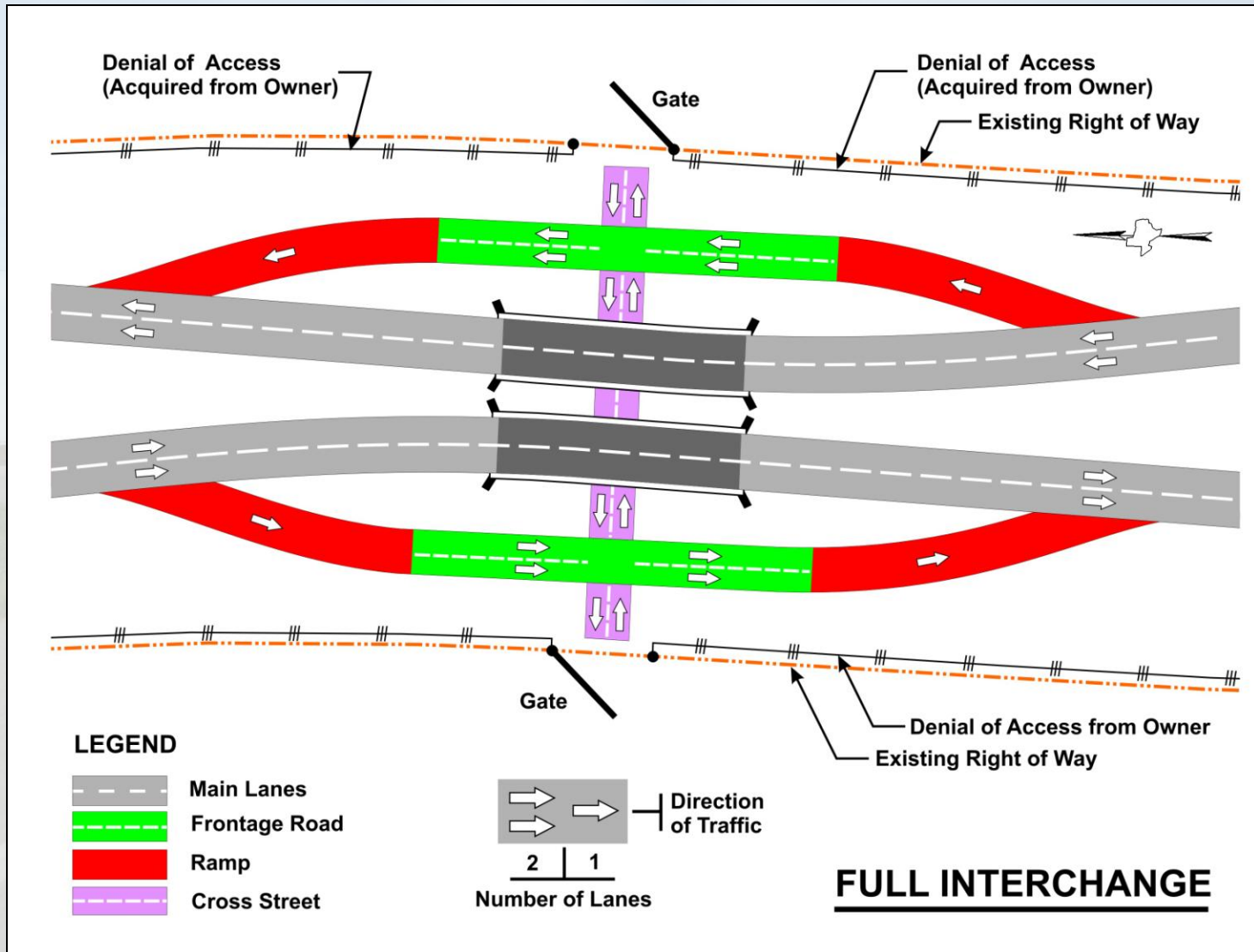
- Controlled Access
- Interchanges and frontage roads where needed
- Relief routes



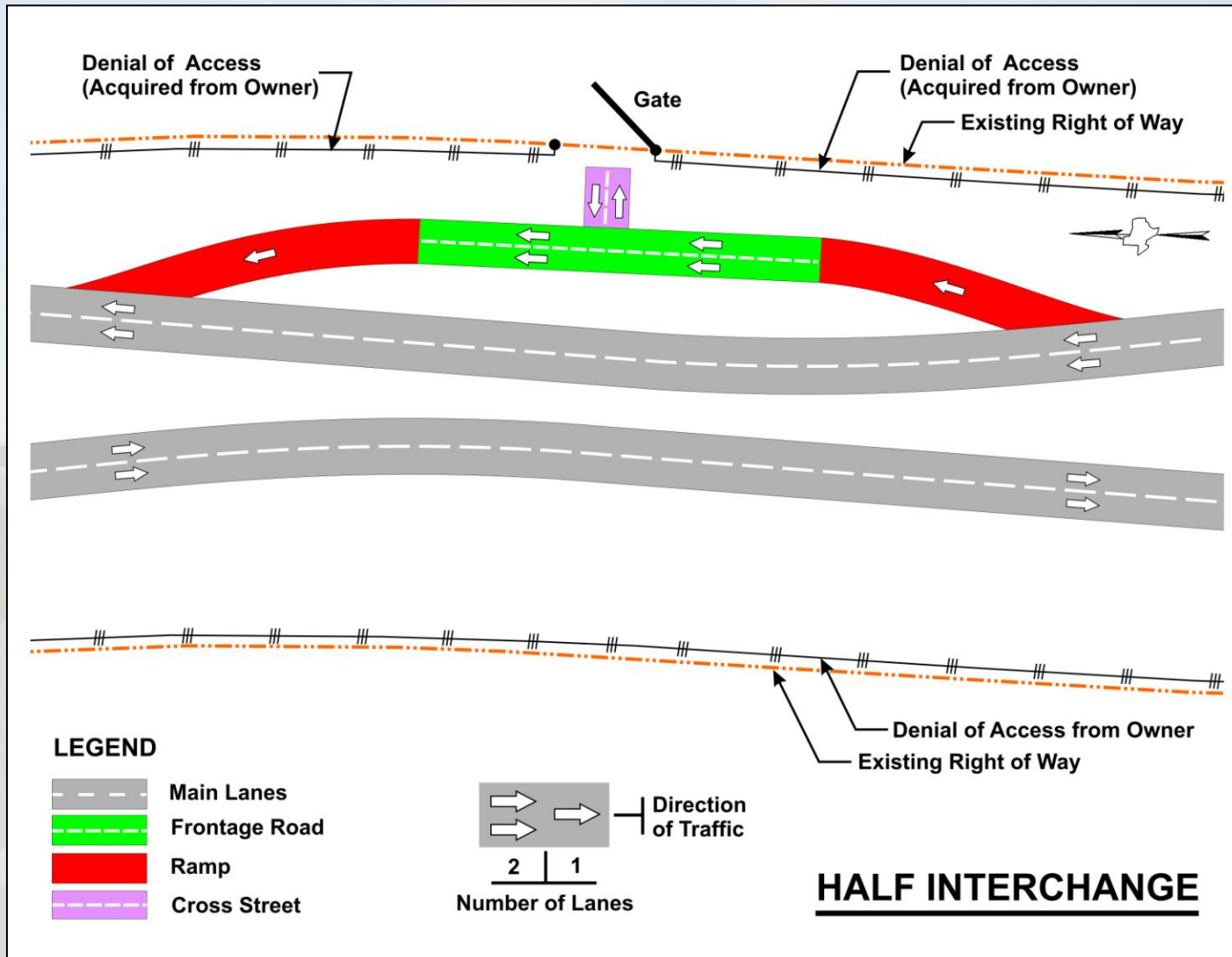
Possible Solutions



Full Interchange



Half Interchange



Possible Relief Routes

- To avoid potential community impacts



- Must also avoid environmentally sensitive areas
- Tolloed Relief routes will maintain speed and produce time savings

Why Consider Tolling?

- Texas has a transportation funding problem
- Traditional sources not keeping up with state highway needs
- Maintenance costs alone are more than the funds brought in by the state fuel tax
- Must find new funding sources
- TxDOT requires any new facility on new ROW to be considered for tolling

Environmental Constraints

- Socioeconomic factors
- Historic Properties and Archeological Sites
- Threatened and Endangered Species



Other Constraints

- Railroad
- Oil and Gas Wells
- Utilities



Overall Environmental Process Public Participation Opportunities

➔ *First Round Public Information Meetings in Support of the Following Activities:*

- Identify Need & Purpose
- Identify Prior Studies/Research
- Identify Environmental Features and Constraints
- Identify preliminary alternatives based on previous steps and comments

Overall Environmental Process

➔ *Second Round Public Information Meetings (Summer 2008)*

- Revise/Refine alternatives based on Public Information Meetings comments
- Gather environmental data on alternatives
- Write Environmental Assessment on alternatives including No Action, and choose Recommended Alternative
- Environmental Assessment (EA) 30 Day Review and Comment Period

Overall Environmental Process

⇒ *Public Hearings on Environmental Assessment (EA) and Recommended Alternative (late Spring 2009)*

- Ten Day Post – Hearing EA Comment Period
- Consider public hearing comments, compile public hearing report and findings

THANK YOU FOR COMING

Please leave your comments at the registration desk or mail to:

**US 77 Highway Upgrade
P.O. Box 3706
Corpus Christi, Texas 78463-3706**

You may also leave verbal comments which will be transcribed by the court reporter after the meeting